



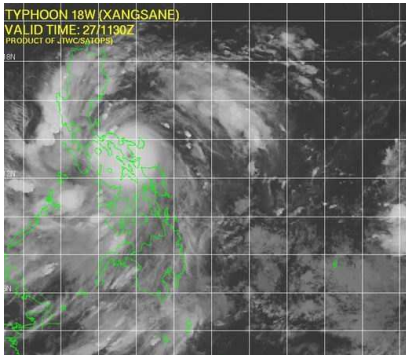
STABIPLAGE®

# THE STABIPLAGE® letter

by Fabrice CAROL - fc.stabiplate@wanadoo.fr

## The safeguard of river banks and beaches

### STABIPLAGE® in the middle of typhoons - Baria Vung Tau beach (VIETNAM)



They wear the name of Cyclones, Hurricane or even TYPHOON, depending on the location of the earth globe (hemisphere) where they prevail. But all have a point in common: they are all characterised by winds of an extreme violence (up to 300km/h) responsible for important material damages, floods and unfortunately, very often as well, irreplaceable human losses. companies for the phase of realization.

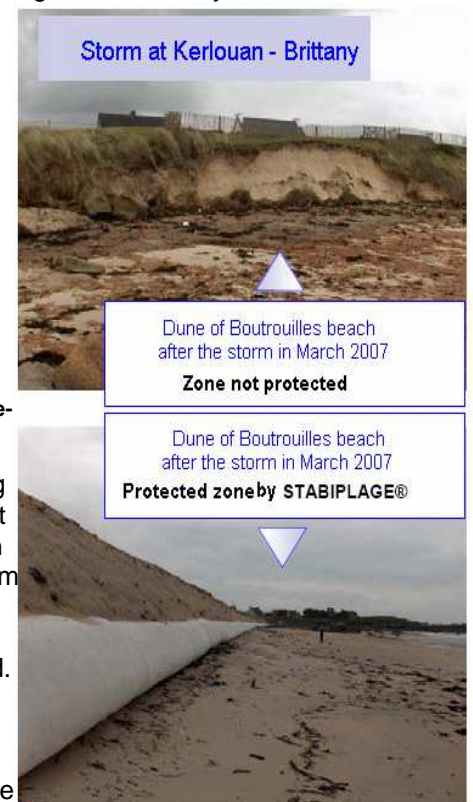
In our 1st Newsletter (August 2005) we had made a report on the realization of a STABIPLAGE® project on LOCAN beach in Baria Vung Tau Province, South Vietnam. 8 STABIPLAGE® perpendicular to the coastline have been set up to increase the value of the beach and to protect it, as well as its lagoon. In this part of the country, vis-a-vis with the China Sea, typhoons of a great intensity sweep the coast regularly. The last one, in December 2006, was characterized by winds of about 250 km/h. Important damages, matériel and human, have unfortunately been recorded. LOCAN beach, as for it, held well and especially could play its part of "shock absorber" to the important swells caused by winds: "if STABIPLAGE® works had not been set up, the sea would have swallowed us up", declared the owner of the hotel located near the lagoon.

Even if the works were uncovered on one third of their length, their qualities have enable to ensure enough their stability and to play their role: works have prevent the beach from a full destruction that would have put into danger the lagoon as well as houses, hotels and shellfish farming infrastructures.

Once the Typhoon over, works could process again to sediment harness and help the beach building up again ... naturally.

### The dune of Boutrouilles beach at Kerlouan - see photos opposite-

(Abers Area - North Finistère) is protected since November 2006 by a STABIPLAGE® of 270 meters long implanted at the bottom of the marine side. At the end of the building site, a new profile of the front dune had been realized to strengthen the aesthetic aspect of the dune and to favour a quick come back of the plant zone. The dune has then been planted with beachgrass plants. At the end of March, the site was in the centre of a storm of a rare intensity. Winds of North to North-East of more than 120 km/h (200 km/h recorded at Ouessant) have generated important swells that have strongly eroded the profile of the beach and taken away part of the buffer, having the work a little uncovered. The bottom of the dune remained intact. The work, in a still position, played its role to protect and to maintain the dune. From now on, more quiet swells should enable a progressive and natural nourishment of the profile of the beach, encouraged by the work, non reflective and permeable. **Photos:** the beach profile has sustained a decrease of about 70 cm in height. **Photo on top:** waves have destroyed the dune, not protected.



Storm at Kerlouan - Brittany

Dune of Boutrouilles beach  
after the storm in March 2007  
**Zone not protected**

Dune of Boutrouilles beach  
after the storm in March 2007  
**Protected zone by STABIPLAGE®**

### Graye sur Mer beach – Normandy – in a good trend



The eastern littoral part of the breach of La Valette, in Graye sur Mer town, is part of a coastline for which the average backward movement of the coast is estimated to 16,98 m for the years 1995-2004. From now, on this area is protected by 5 STABIPLAGE® works perpendicular to the coastline ; they catch and stabilise longshore sediments: the last 2 works have

been set up in march 2007. The natural nourishment of the beach and the stabilization of the beach profile all along the coast continues despite heavy swells that occurred during this winter on the Calvados coast ... and on French coasts (photo above). The beach profile goes up gradually and thus protects dunes from the risk of submersions and of the attack of swells: a living beach, a natural protection worthy of such name.

Contact : stabiplate@wanadoo.fr / tel : +33 (0)298 523 255 / Fax : +33 (0)298 580 006

Société ESPACE PUR (Le Guilvinec - Paris - Perpignan) : PENDREFF LAE - 29 730 TREFFIAGAT - LE GUILVINEC - France